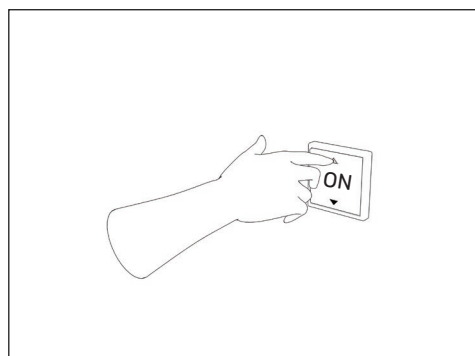
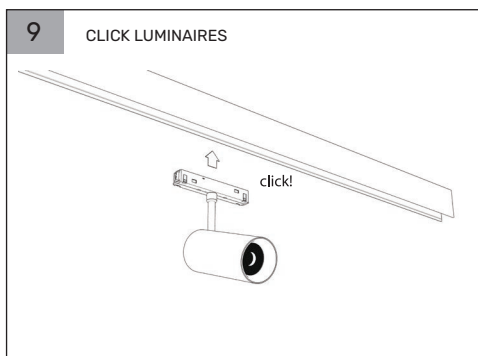
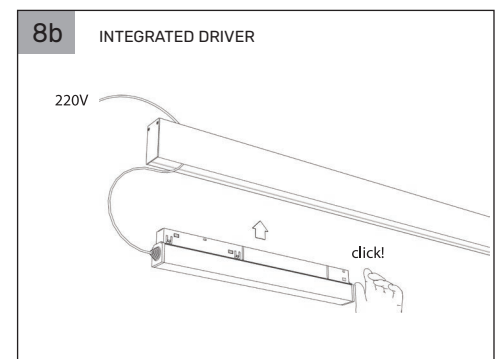
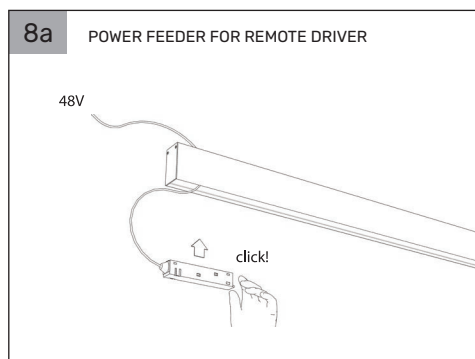
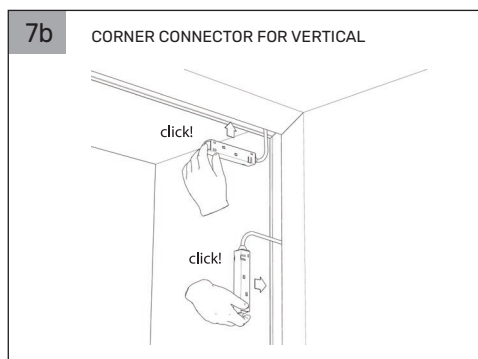
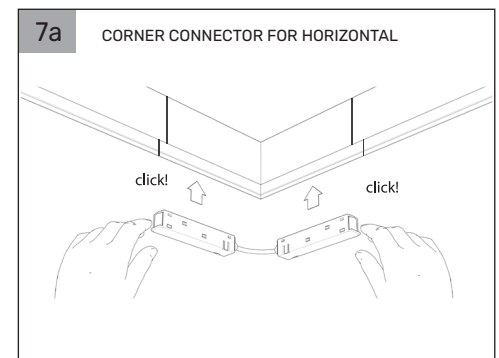
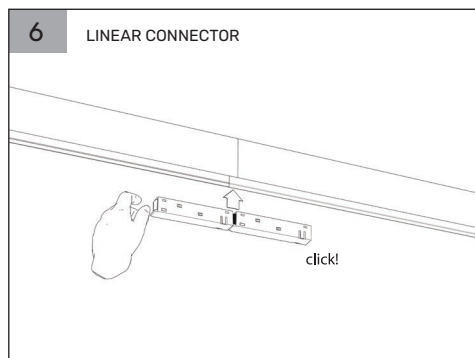
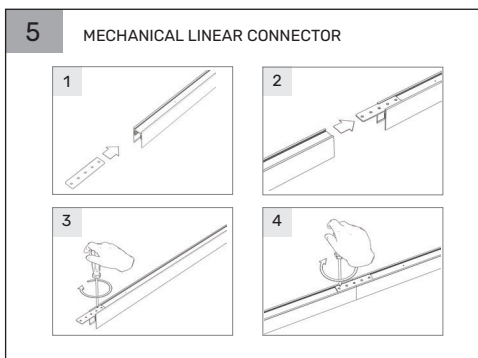
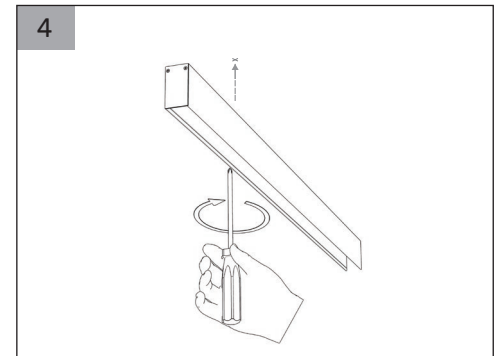
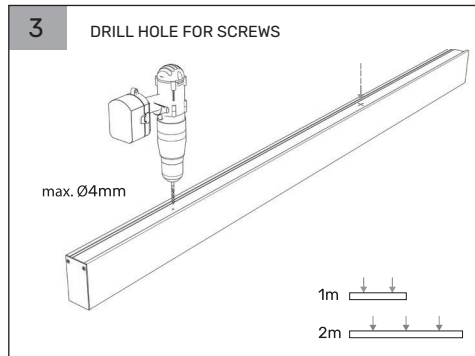
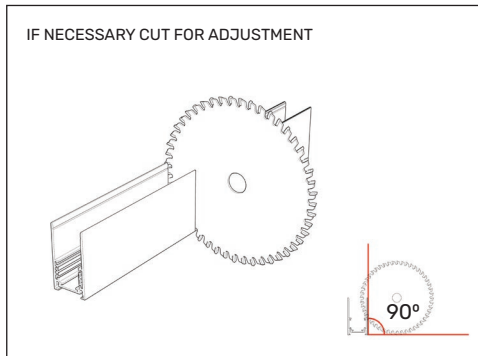
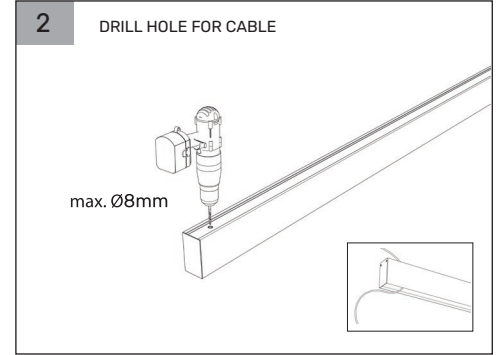
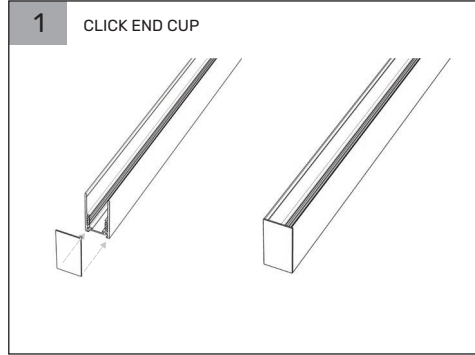
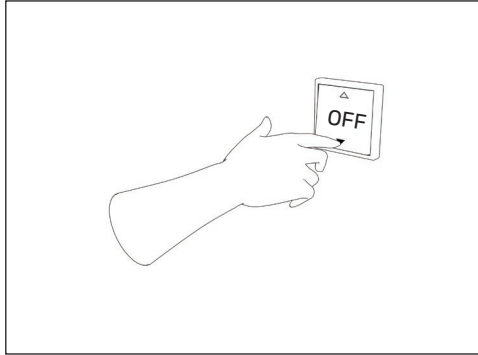


Z2000-48 SR

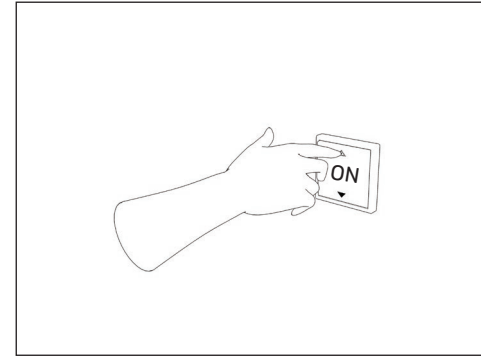
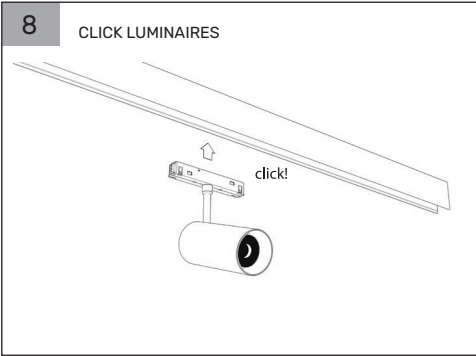
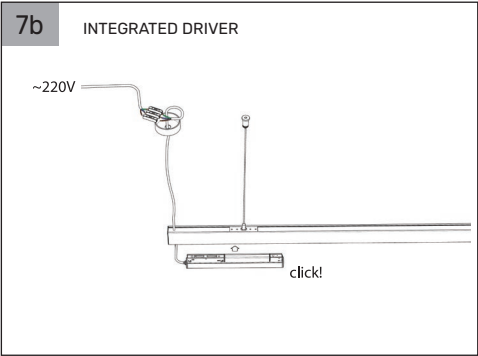
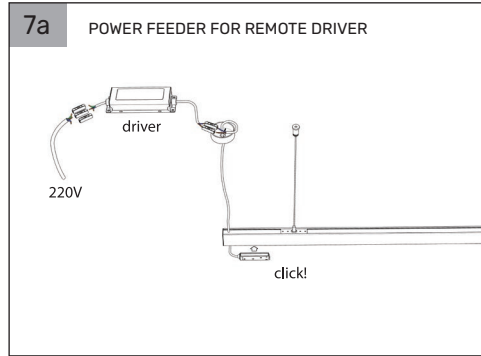
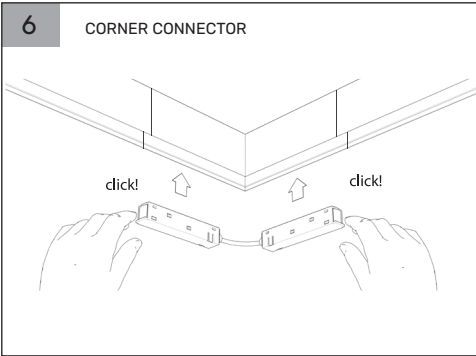
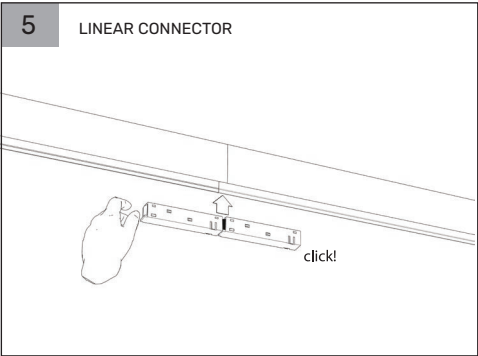
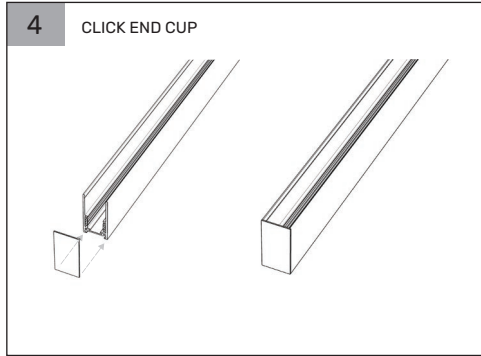
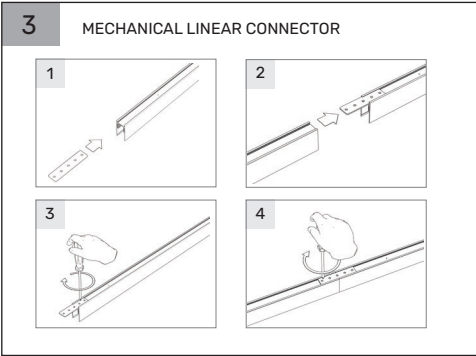
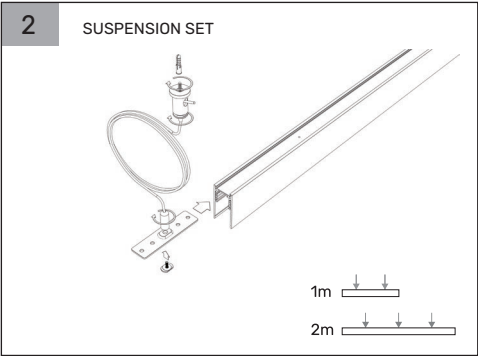
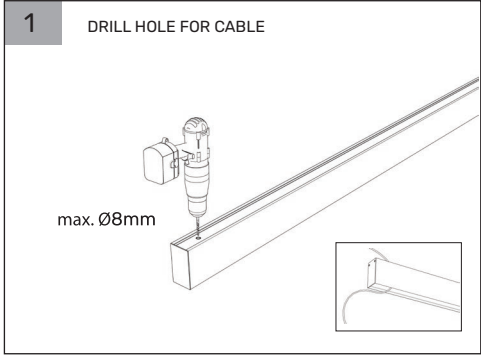
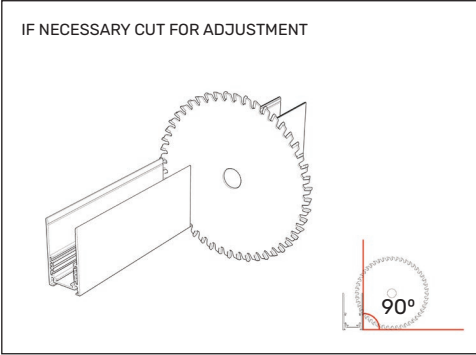
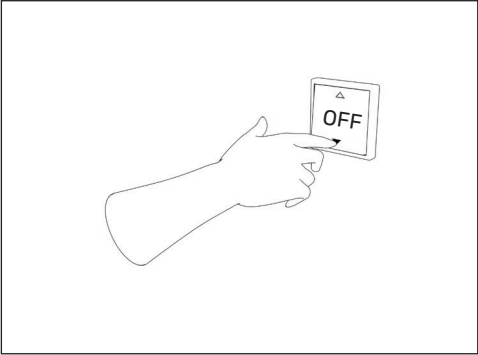
Surface system mounting instruction

zonda lighting



Z2000-48 SR
Suspension system mounting instruction

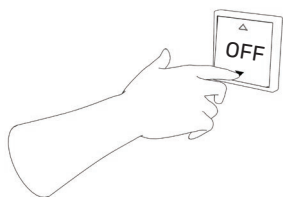
zonda lighting



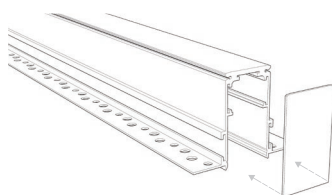
Z2000-48 TR

Recessed system mounting instruction

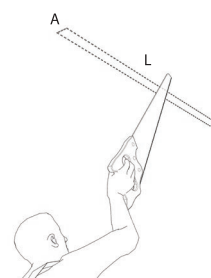
zonda lighting



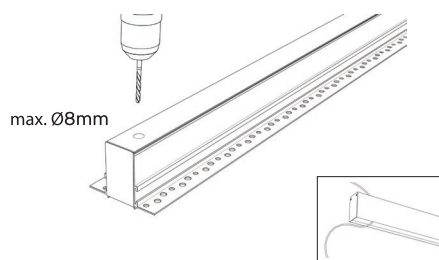
CLICK END CUP



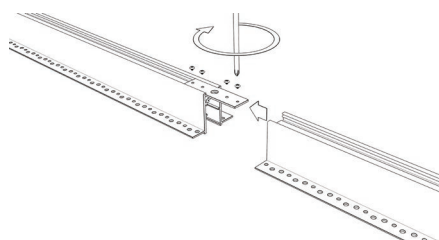
1 CUT HOLE IN CEILING



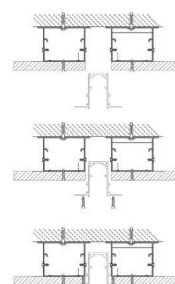
2 DRILL HOLE FOR CABLE



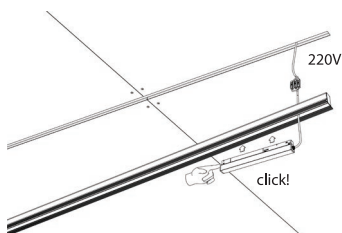
3 MECHANICAL LINEAR CONNECTOR



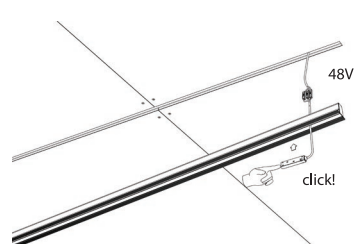
4



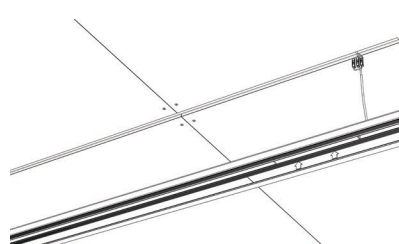
5a INTEGRATED DRIVER



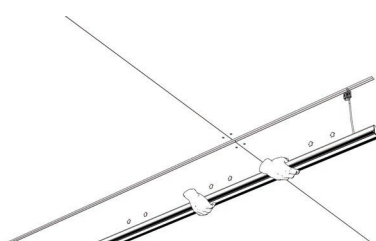
5b POWER FEEDER



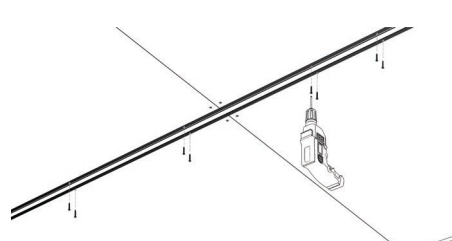
6 CLICK MOUNTING COVER



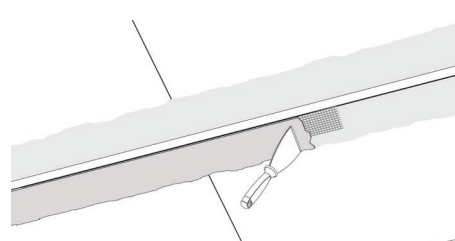
7 PUT IN CEILING



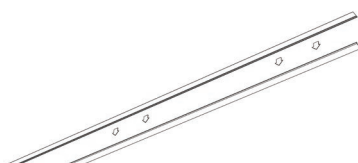
8 TO SCREW THE PROFILE



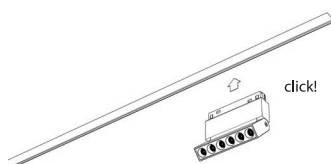
9



10 PUT OUT THE MOUNTING COVER



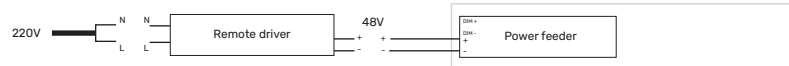
11 CLICK INSIDE THE LUMINAIRES



INTEGRATED DRIVER SCHEME



REMOTE DRIVER SCHEME



DIMMABLE DALI SCHEME

